



One Body Campaign

2014-15 CAMPAIGN OVERVIEW, GOAL: \$425,000



The Ad Fontes Vision

Ad Fontes Academy provides a distinctive classical Christian education that serves families and students from the western Fairfax, Loudoun, and Prince William counties. Ad Fontes is entering it's 19th school year with 125 graduates and 200 enrolled students. Students encounter a thoroughly Christ-centered community that deepens their walk with God and shapes their character and worldview through committed Christian faculty. Students deeply engage in their learning, challenged to secure foundational knowledge and then, move to deeper understanding and to eloquent expression of their own ideas in writing and presentations. Ultimately, we strive to equip thoughtful, capable servant leaders to bring excellence and integrity to the colleges and communities where they are sent.

One Body Campaign Purpose

As a non-profit private school, we depend on community financial support beyond tuition to expand our facilities to reach and better serve more students as well as providing a classical Christian education to families with proven financial need. This school year, AFA provided over \$240,000 in tuition aid.

The 2014-15 One Body Fund has three primary benefits:

- To support tuition assistance for families in need and for teacher development
- To complete our modular building to have one K-12 campus by early 2015
- To provide seed funding for the purchase of permanent campus property

AFA Facility Vision

Modular: Ad Fontes first facility goal for many years has been to move to a unified K-12 campus. Over the past 12 months, we have developed and implemented a plan to build a 10,000 square foot modular facility at Centreville Pres., the site of our Upper School campus. The modular would house our K-6th graders and allow expanded enrollment from 210 to 275 students! We have raised \$750,000 towards the project and need \$175,000 to fund all expenses. This facility has the capability to be moved to our permanent campus in the future.

Permanent Campus: Our long-term facility vision is to have our own permanent campus in the Centreville area. New Life Church has opened the potential to evaluate their 11 acre property on Lee Highway, one minute from the CPC campus. These funds would allow us to do a thorough property evaluation and make an initial down payment on property.

Campaign Breakdown

Tuition Assistance and Teacher Development:	\$150,000
Modular Project Completion:	\$175,000
Permanent Campus Property Evaluation:	\$100,000
Total:	\$425,000

Giving Options

The One Body Fund is our annual giving campaign to support operational and facility needs through tax deductible financial contributions.

The AFA Legacy Bond is our community bond effort to invest funds to expand AFA facilities over a 3-10 year period at a 2-5% rate of return. We have raised \$568,000 towards our \$1,000,000 bond goal. This includes direct cash investments or through a self-directed IRA approved through Equity International.

Leaving a Legacy

Ad Fontes is at the cusp of establishing deeper roots as a permanent fixture in the Northern Virginia area, offering an unparalleled Christ-centered and classical education for generations to come. We invite you to join us in making this a reality!



One Body Campaign

FACILITY VISION AND PLAN



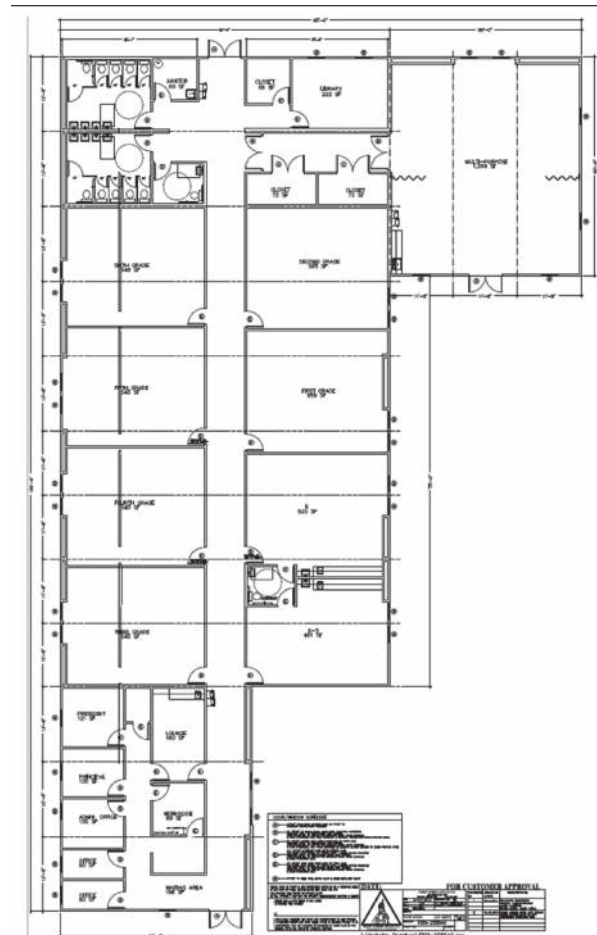
FACILITY PLAN

Ad Fontes Academy is nearing full student capacity at our two church locations. The school's challenging program has been so attractive to the community that we are now in need of a new facility. AFA aims to unite into one K-12 campus at Centreville Presbyterian Church (CPC) by August 2014 through the addition of a 10,000 square foot modular building. This modular would be owned by Ad Fontes and will increase our overall student capacity from 210 to 275 students.

This high quality, new modular building would be located directly behind the CPC building and house the Lower School (Grades K-6) including:

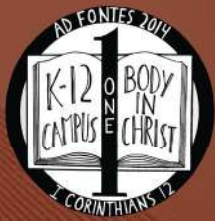
- 8 classrooms, 550 sq. ft. each, for 20 students
- Boys' and Girls' Bathrooms
- One large multi-purpose room
- Offices and reception area
- Conference room
- Small library
- Discovery therapy room

Fairfax County has approved the modular building for 8 years, and is currently reviewing the site plan. The modular facility meets all commercial building codes and has the ability to be moved to a permanent Ad Fontes campus, our ultimate goal, as reflected in our stepping stone plan.



AFA Facility Vision – Stepping Stones

2013-14 Rent CPC and St. Johns, 213 student capacity	2014-15 CPC 10k sq ft Modular 275 student capacity, K-12 campus	2014-15 Permanent Campus Land Evaluation.	2015-18 AFA Land Purchase \$1.5 million and County Approvals	2017-2020 AFA Land Site Work/ Athletic Fields	2018-2022 AFA Facility Phase I Include Science, Arts and Athletics 400 Student capacity
\$1.3M	\$50k	\$750-850k	\$750-950k	\$5-10 mill.	



One Body Campaign

2014-15 PLEDGE FORM



Name: _____ Address: _____

E-mail: _____ Phone: _____

I (We) support the Ad Fontes *One Body* Campaign in the following ways:

- Prayer:** I (We) are committed to actively pray for the campaign and the school.
- One Body Fund (All contributions to AFA are tax-deductible)**
- I will make a one-time gift of \$ _____ on the date of _____.
- I will make a monthly gift of \$ _____ from _____ to _____.
- I will make a gift of \$ _____ with payments on the following dates: _____.
- My company, _____, will match this gift.
Please provide match level and company contact:
- Match Level: _____ Company Contact: _____
- Check
- Credit Card (through adfontes.com/support-afa/make-a-gift/)
- AFA Legacy Bond (Growing AFA facilities through a 3-10 year interest bearing bond)**
- I will make a bond investment of \$ _____ over _____ years.
- Contact Me:** Please contact me to discuss my involvement.

Signature: _____ Date: _____

You can e-mail the pledge sheet to dluckenbaugh@adfontes.com or mail to Ad Fontes Academy, P.O. Box 916, Centreville, VA, 20122, Attn: *One Body* Campaign.

You may contact Dean Luckenbaugh, AFA President, at 571.271.5660 or dluckenbaugh@adfontes.com, or Beth Baron, Advancement Director at 703.402.8899 or bbaron@adfontes.com with any questions or for a stock gift.

THANK YOU FOR YOUR PRAYERS AND YOUR SUPPORT OF AD FONTES ACADEMY!