



# One Body Campaign

## FACILITY VISION AND PLAN



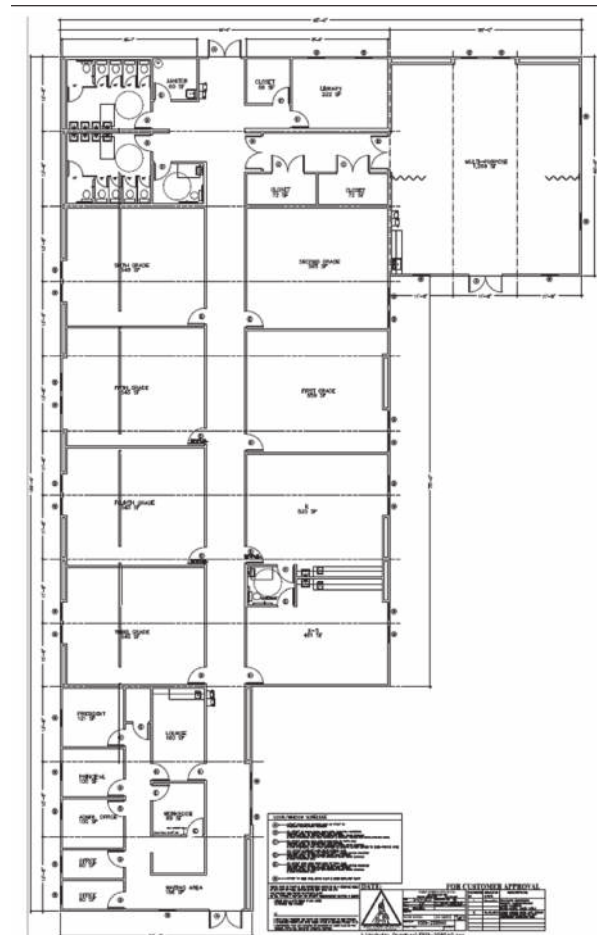
### FACILITY PLAN

Ad Fontes Academy is nearing full student capacity at our two church locations. The school's challenging program has been so attractive to the community that we are now in need of a new facility. AFA aims to unite into one K-12 campus at Centreville Presbyterian Church (CPC) by August 2014 through the addition of a 10,000 square foot modular building. This modular would be owned by Ad Fontes and will increase our overall student capacity from 210 to 275 students.

This high quality, new modular building would be located directly behind the CPC building and house the Lower School (Grades K-6) including:

- 8 classrooms, 550 sq. ft. each, for 20 students
- Boys' and Girls' Bathrooms
- One large multi-purpose room
- Offices and reception area
- Conference room
- Small library
- Discovery therapy room

Fairfax County has approved the modular building for 8 years, and is currently reviewing the site plan. The modular facility meets all commercial building codes and has the ability to be moved to a permanent Ad Fontes campus, our ultimate goal, as reflected in our stepping stone plan.



### AFA Facility Vision – Stepping Stones

|  |   |   |  |   |   |
|--|---|---|--|---|---|
| <b>2013-14</b><br>Rent CPC and St. Johns, 213 student capacity | <b>2014-15</b><br>CPC 10k sq ft Modular 275 student capacity, K-12 campus | <b>2014-15</b><br>Permanent Campus Land Evaluation. | <b>2015-18</b><br>AFA Land Purchase \$1.5 million and County Approvals | <b>2017-2020</b><br>AFA Land Site Work/ Athletic Fields | <b>2018-2022</b><br>AFA Facility Phase I Include Science, Arts and Athletics 400 Student capacity |
| \$1.3M   | \$50k   | \$750-850k  | \$750-950k   | \$5-10 mill.  |   |